

INDIANA DEPARTMENT OF TRANSPORTATION	
SIGN DETAILS TYPICAL LOCATION	
SEPTEMBER 2010	
STANDARD DRAWING NO.	E 802-SNPL-01
	<i>/s/ Richard L. VanCleave</i> 09/01/10 DESIGN STANDARDS ENGINEER DATE
	<i>/s/ Mark A. Miller</i> 09/01/10 CHIEF HIGHWAY ENGINEER DATE
DESIGN STANDARDS ENGINEER	

TYPE OF ROADWAY	INTERSTATE AND DIVIDED HIGHWAY WITH SHOULDER, RURAL & URBAN	DIVIDED HIGHWAY WITH CURB, RURAL & URBAN	NON-DIVIDED HIGHWAY, RURAL OR CITY STREET	NON-DIVIDED HIGHWAY, URBAN
CLEARANCE				
VERTICAL: EDGE OF TRAVELED WAY PAVEMENT TO BOTTOM OF SIGN OR SIGNS	7 ft TO 7.5 ft ①	7 ft TO 7.5 ft ②	5 ft TO 5.5 ft ④, ②	7 ft TO 7.5 ft ②
HORIZONTAL: EDGE OF TRAVELED WAY PAVEMENT TO EDGE OF SIGN OR SIGNS	12 ft min. or 6 ft min. from the shoulder, whichever is greater	6 ft min. ③	12 ft min. or 6 ft min. from the shoulder, whichever is greater	12 ft min. or 6 ft min. from the shoulder, whichever is greater ③

NOTES:

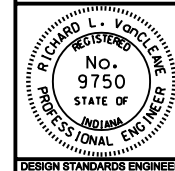
- ① If a secondary sign is mounted below another sign, the secondary sign shall be installed at least 5 ft. above the level of the pavement edge.
- ② The height to the bottom of a secondary sign mounted below another sign may be 1 ft. less than the height specified above.
- ③ In urban areas where lateral offsets are limited, a minimum lateral offset of 2 ft. may be used. A minimum offset of 1 ft. from the face of the curb may be used in urban areas where sidewalk width is limited or where existing poles are close to the curb.
- ④ Where parking or pedestrian movements occur on an expected recurring basis, the clearance to the bottom of the sign shall be at least 7 ft.

INDIANA DEPARTMENT OF TRANSPORTATION

**HORIZONTAL AND VERTICAL
SHEET SIGN CLEARANCE**

SEPTEMBER 2003

STANDARD DRAWING NO. E 802-SNPL-02



/s/ Richard L. VanCleave 9-02-03
DESIGN STANDARDS ENGINEER DATE

/s/ Richard K. Smutzer 9-02-03
CHIEF HIGHWAY ENGINEER DATE

DESIGN STANDARDS ENGINEER